

18 Dec 2025



**Worship on 21 December 2025
at 10:00 a.m.**

**LOVE Advent 4
Christmas Pageant**

This Week's Schedule

All events and room bookings are not on this page; please check
ERMUC's online calendar at www.ermuc.ca/event/event-calendar for more info.

**Edith Rankin Staff will be on holidays from 25 December 2025
returning on 05 January 2026**

Sun 21 Dec

10:00 a.m.

**LOVE Advent 4 Worship
Christmas Pageant**

**Sanctuary
Zoom You Tube**

Mon 22 Dec

**11:00 a.m. - 12:00
p.m.**

Limestone Ringers

Sanctuary

Tues 23 Dec

5:30 - 9:00 p.m.

Limestone Ringers

Sanctuary

Wed 24 Dec

10:00 a.m. - 11:30 p.m.

11:00 a.m. - 12:00 p.m.

7:30 p.m.

**Bring Your Own Craft
Pastoral Care Gathering**

**Christmas Eve
Candlelight and
Communion**

**Welcome Centre
Zoom**

Sanctuary



Worship Services at ER for December

December 21

10:00 a.m.

LOVE Advent 4

December 24

7:30 p.m.

Christmas Eve Candlelight
and Communion

December 28

10:00 a.m.

Lessons and Carols



Yvonne Notley	Dec 4, 2025
Helga Mueller	Dec 8, 2025
Henry Green	Dec 12, 2025
Carolyn Green	Dec 14, 2025
Marlene Metzler	Dec 21, 2025
Dave Metzler	Dec 29, 2025
Pearl Lemmon	Dec 29, 2025
Wanda Burke	Dec 31, 2025



Food for the North



My heart is overflowing with gratitude for the support given to the Food for the North campaign. Thank you everyone. We raised a grand total over \$2,500!

Christmas Blessings to all,
Marilyn Rodger
Mission and Service Advocate



**Join us for
Wellness Walking
Friday at 10:00 AM
for a Christmas
celebration!**

**Walk in the
Sanctuary & stay
for social time & treats.**



You Tube Link to Christmas Cantata

A different version is also incorporated into last week's Sunday service (on the website)

<https://youtu.be/Poxk85ybVLU>



Christmas

WORD SEARCH

Find the hidden Christmas related words. The words can be horizontal, vertical and diagonal. The letters that are left over, form a hidden message!

candy canes
celebrate
chimney
Christmas tree
decorations
eggnog
Frosty
greetings
Jingle Bells
jolly
merry
mistletoe
Noel
North Pole
poinsettia
reindeer
Santa Claus
Scrooge
snowflakes
stockings
turkey

E	G	G	N	O	G	Y	I	T	S	N	O	T	C	S
W	J	I	N	G	L	E	B	E	L	L	S	E	M	U
H	A	C	S	M	F	N	T	S	U	E	L	E	N	A
P	D	A	N	I	R	M	E	R	T	E	R	H	E	L
O	C	N	O	S	O	I	H	R	B	R	I	S	S	C
I	T	D	I	T	S	H	M	R	Y	T	A	E	S	A
N	G	Y	T	L	T	C	A	T	U	S	K	N	R	T
S	R	C	A	E	Y	T	R	R	G	A	E	O	E	N
E	E	A	R	T	E	E	K	N	L	M	W	R	I	A
T	E	N	O	O	H	E	I	F	A	T	J	T	N	S
T	T	E	C	E	Y	K	W	T	M	S	O	H	D	A
I	I	S	E	T	C	O	T	E	R	I	L	P	E	S
A	N	I	D	O	N	L	E	O	N	R	L	O	E	T
S	G	W	T	S	H	O	S	A	R	H	Y	L	R	O
U	S	S	N	D	E	G	O	O	R	C	S	E	I	T

Hidden message: _____

For Canadian winter reading, try Cozy Mysteries.

Canadian Authors & Stories (Perfect for the Setting)

Moon of the Crusted Snow by Waubgeshig Rice: An Indigenous story set during a harsh winter, exploring survival and community.

Chief Inspector Gamache series by Louise Penny: A beloved Canadian mystery series set in Quebec's Eastern Townships, great for long winter nights.

A Two-Spirit Journey by Ma-Nee Chacaby: A powerful memoir about resilience and identity, winner of Canada Reads 2025.

Cozy & Comforting Reads

Little Women by Louisa May Alcott: A timeless classic for warmth and family connection.

The Thursday Murder Club by Richard Osman: Witty and charming mysteries from a retirement village.

The City Baker's Guide to Country Living by Louise Miller: A heartwarming tale perfect for Hallmark movie fans.

Immersive & Thematic Reads

The Great Alone by Kristin Hannah: A story set in the Alaskan wilderness, perfect for chilly vibes.

The Bear and the Nightingale by Katherine Arden: Russian folklore and fantasy, ideal for winter.



CARING CONNECTIONS

Pastoral Care Updates from Alanna

I can hardly believe this is my last Caring Connections entry for 2025. My heart is full as I reflect on my first year as the Edith Rankin Lay Pastoral Care Visitor. I have made so many wonderful connections with our Classics and beyond. I am grateful to everyone who has helped me settle into the position and who has encouraged me along the way. How can it have been almost a year since I sat with Alma Barney as she so graciously shared her knowledge and insights with me. I am so grateful to you, Alma, for your time and patience. You gave me the confidence and roadmap to step into the unknown.

Over the past year, I have been blessed to connect with most of our Classics. I have learned so much from them and have made so many cherished connections. Thank you for welcoming me and showing me such love and acceptance right from the start. The Breakfast Bunch and Wellness Walking groups are highlights of my month/week. There is so much laughter and camaraderie with all in attendance. No matter how you arrive, you are bound to leave in a good mood!

My proudest accomplishment to date is the Care and Share lunches that Michelle and I launched in October. This week was our third and it was another overwhelming success. When Michelle and I first talked about the concept, we had no idea if anyone would even show up. But each month we have had 30 or more attendees. The joy in the Welcome Centre, or "Edith's Café" as we have lovingly nicknamed it, has been palpable. The energy and vibrancy of the connections being made is contagious. Thank you to everyone who has participated in our table conversations - and Christmas singalong - with enthusiasm! A very special thanks to the angels in our midst who have covered the costs of the November and December lunches and to those who have already spoken up to cover expenses for January, February, and March. Thank you, thank you, thank you.

Although there are many wonderful people who have helped me through my first year, I would be remiss if I did not give a special acknowledgement to Joyce Payne. Joyce has been a friend since our earliest days attending Edith Rankin. She was one of the first to speak to Ian and me and always greeted us each week with a smile and a hug. She helped to make Edith Rankin our Kingston church home. But more than that, she has been an invaluable support, inspiration, and helper to me this past year. Joyce is always there to lend a hand and a word of encouragement. We could certainly not run Care and Share lunches without her endless support. She helps us every step of the way, from food preparation through to cleanup. So, Joyce, from the bottom of my heart, I thank you. I am so grateful for all that you do for me and for Edith Rankin Memorial United Church.

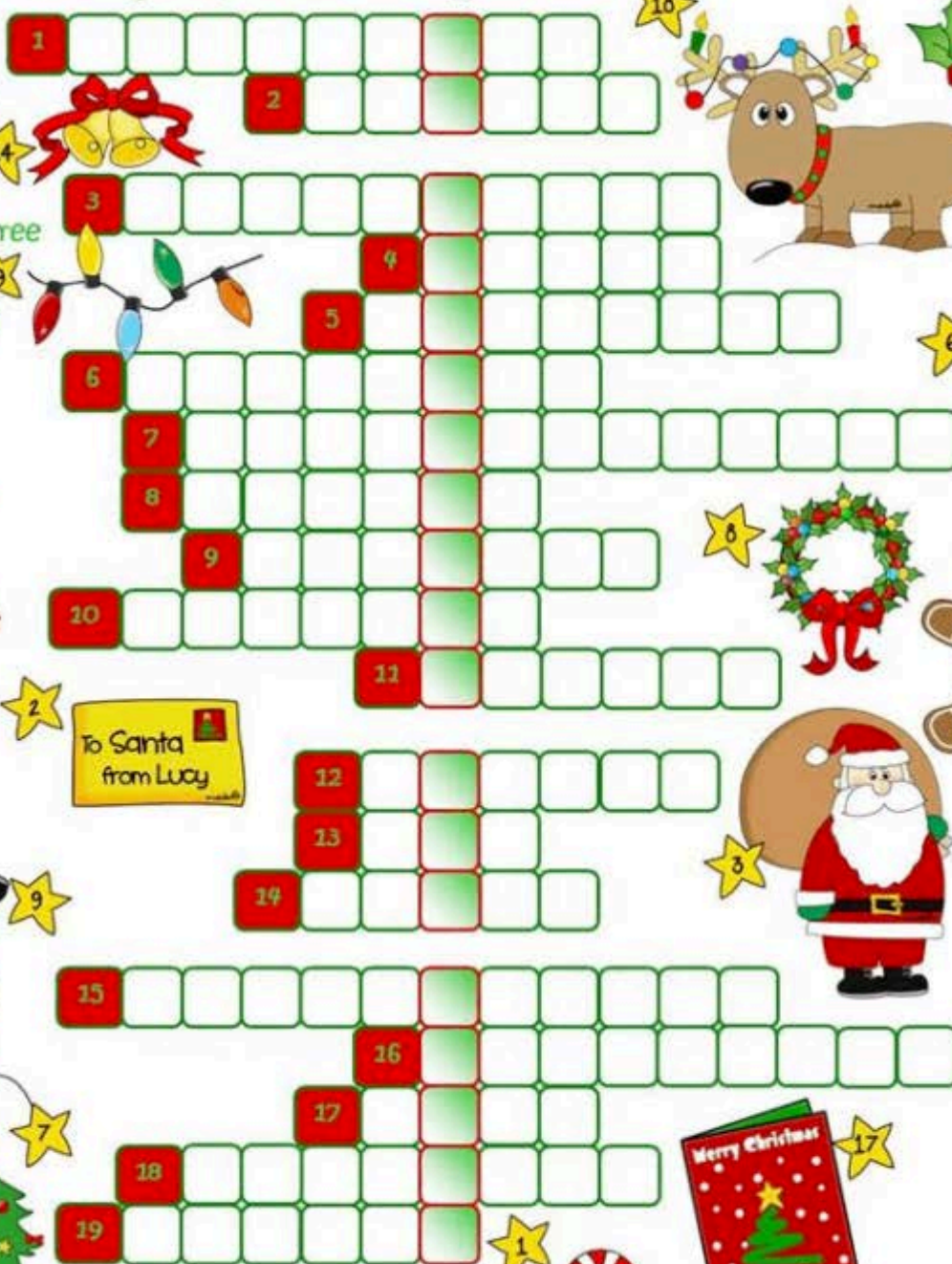
And of course, Michelle has been a tremendous mentor, guide, resource, cheerleader, and team captain. Without her encouragement and support I would not be where I am today. Thank you, Michelle, there really are not enough words to express my gratitude.

HOW TO CONTACT ALANNA: PASTORALCARE@ERMUC.CA • 613-389-2530 X 102

Christmas fun

Match the words to the correct pictures to complete the Crossword. Then find a secret message.

bells
candle
candy cane
card
chimney
Christmas tree
elf
gingerbread
holly
letter
lights
ornaments
presents
reindeer
Santa Claus
sleigh
snowman
stocking
wreath



The background of the entire image is a close-up, soft-focus photograph of pine branches covered in a thick layer of white frost or snow. The branches are dark green and needle-like, creating a delicate, intricate pattern against a lighter, hazy background.

The Spire

DECEMBER 19TH: 7:30 pm - 10:00 pm

Cantabile Choirs presents: Holiday Magic

DECEMBER 20TH: 7:30 pm - 10:00 pm

Cantabile Choirs presents: Holiday Magic

DECEMBER 21ST: 2:30 pm - 5:00 pm

Cantabile Choirs presents: Holiday Magic

Update on Funds Generated by the Garage Sale and Marketplace

Marketplace sales prior to sale. \$3632.30

Funds collected day of sale. \$5290.00

Xmas sale. \$ 553.75

Sale of gold and cutlery. \$500.00

Online sales Nov and Dec. \$431.00

Total \$10,406.75

When putting away your Christmas decorations and you find things you no longer want, bring them to the church or call Lorna for pick up. I will be accepting donations for next years sale starting in January.

Thank you for all your donations. This is a great way to earn funds, sell items at an affordable price, recycle items , and help to clean out your home of unwanted items.

Thank you, Lorna





Q: What does Santa use to measure?

A: Santimeters!



Q: Where do snowmen go dancing?

A: A snowball!



Q: What does the gingerbread man put on his bed?

A: Cookie sheets!



Q: What do you get if you cross an apple with a Christmas Tree?

A: A pineapple!



Q: Where does a snowman keep his money?

A: In a snowbank!



Q: What do road crews use at the North Pole?

A: Snow cones!



Q: What happens if you eat Christmas decorations?

A: You get tinselitus!



Q: What do you call Santa when he stops moving?

A: Santa Pause



Q: What does an elf study in school?

A: The elfabet



Q: What should you give your parents at Christmas?

A: A list of what you want.



Q: What goes oh, oh, oh?

A: Santa Claus walking backward!



Q: What kind of bug hates Christmas?

A: A humbug!

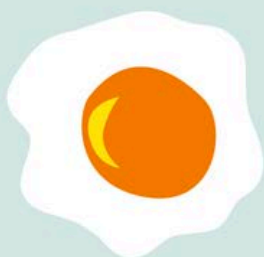


**There will be no
Wellness Walking
on Fri. Dec. 26 or
Fri., Jan. 2.**

**Join us again on
Friday, January 9th
at 10:00 am followed by
treats in the Welcome Centre.**



BREAKFAST BUNCH



Join us at
Rhodes Restaurant
2360 Princess Street
at **9:00 am**

WEDNESDAY, JANUARY 7TH
for fellowship & fun